

## Corporate Group

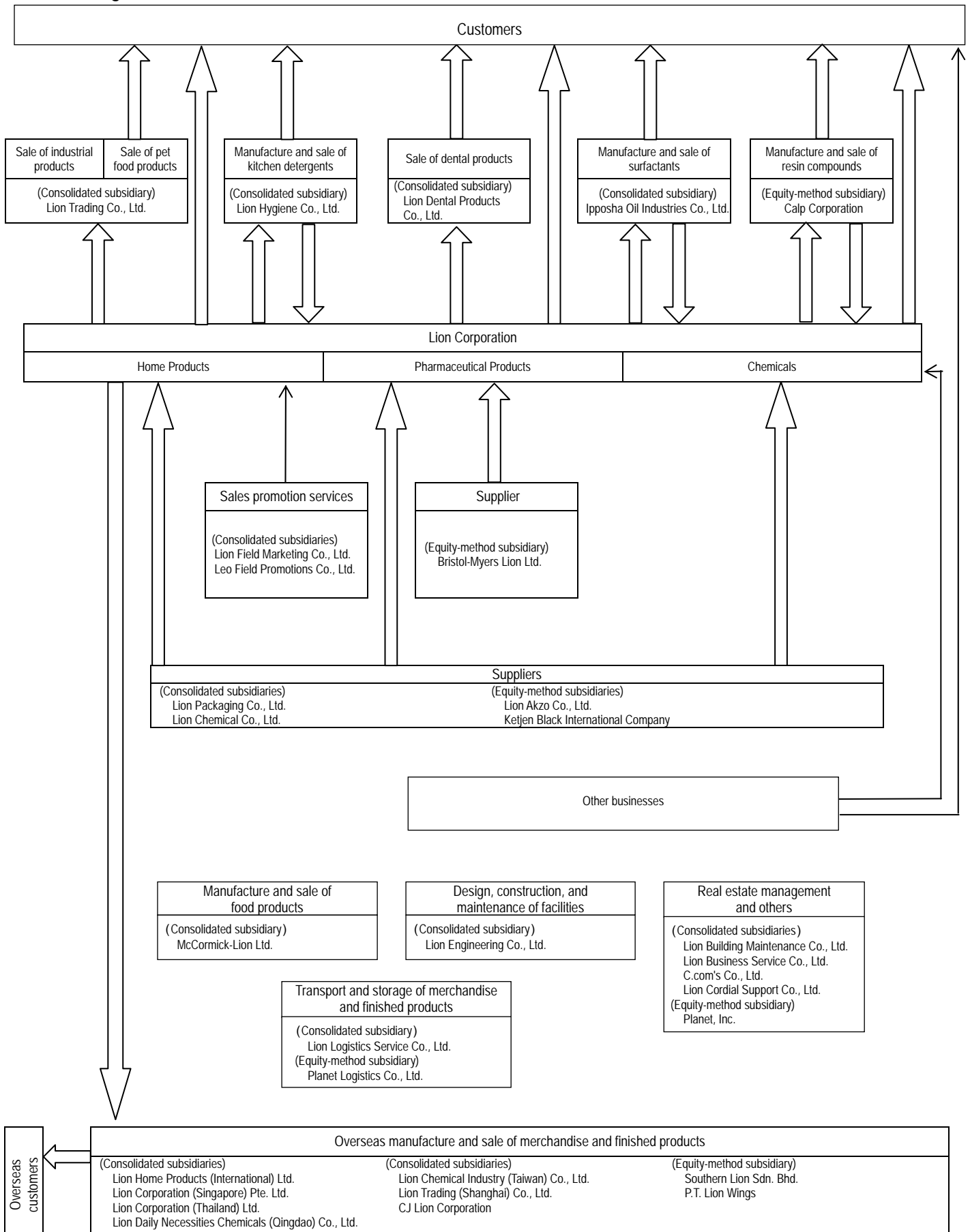
The Lion Group consists of Lion Corporation, 31 subsidiaries (including 23 consolidated subsidiaries and four non-consolidated equity-method subsidiaries), and 17 affiliates (including eight equity-method affiliates). Principal business activities consist of the manufacture and sale of home products, pharmaceutical products, and chemicals. Other business activities involve distribution related to the above business activities and other services.

The relationship between group business activities and business segments is shown below, which is based on the same categorization used for business segments.

Business segment	Main activities	Main companies	
Home Products	Manufacture and sale of home products	Domestic affiliates	Lion Corporation Lion Chemical Co., Ltd. Lion Dental Products Co., Ltd. Lion Trading Co., Ltd. Lion Hygiene Co., Ltd. Lion Packaging Co., Ltd. Lion Field Marketing Co., Ltd. Leo Field Promotions Co., Ltd. Ipposha Oil Industries Co., Ltd. Lion Akzo Co., Ltd. Calp Corporation Ketjen Black International Company
		Overseas affiliates	Lion Home Products (International) Ltd. Lion Corporation (Singapore) Pte. Ltd. Lion Corporation (Thailand) Ltd. Lion Daily Necessities Chemicals (Qingdao) Co., Ltd. Lion Advertising Ltd. CJ Lion Corporation Lion Chemical Industry (Taiwan) Co., Ltd. Lion Trading (Shanghai) Co., Ltd. Southern Lion Sdn. Bhd. P.T. Lion Wings
Pharmaceutical Products	Manufacture and sale of pharmaceutical products	Domestic affiliates	Lion Corporation Lion Packaging Co., Ltd. Bristol-Myers Lion Ltd.

Chemicals	Manufacture and sale of chemical products	Domestic affiliates	Lion Corporation Lion Chemical Co., Ltd. Lion Packaging Co., Ltd. Ipposha Oil Industries Co., Ltd. Lion Akzo Co., Ltd. Calp Corporation Ketjen Black International Company
Other businesses	Transport and storage of merchandise and finished products; design, construction, and maintenance of storage facilities; real estate management; manufacture and sale of food products; management of value-added networks, etc.	Domestic affiliates	Lion Engineering Co., Ltd. Lion Business Service Co., Ltd. Lion Building Maintenance Co., Ltd. Lion Logistics Service Company, Ltd. C.com's Company, Ltd. Lion Cordial Support Co., Ltd. McCormick-Lion Limited Planet, Inc. Planet Logistics Co., Ltd.

# Business Organization Chart



Note: The thick arrows represent transactions of merchandise, finished products, and raw materials. The line arrows represent provision of services, etc.